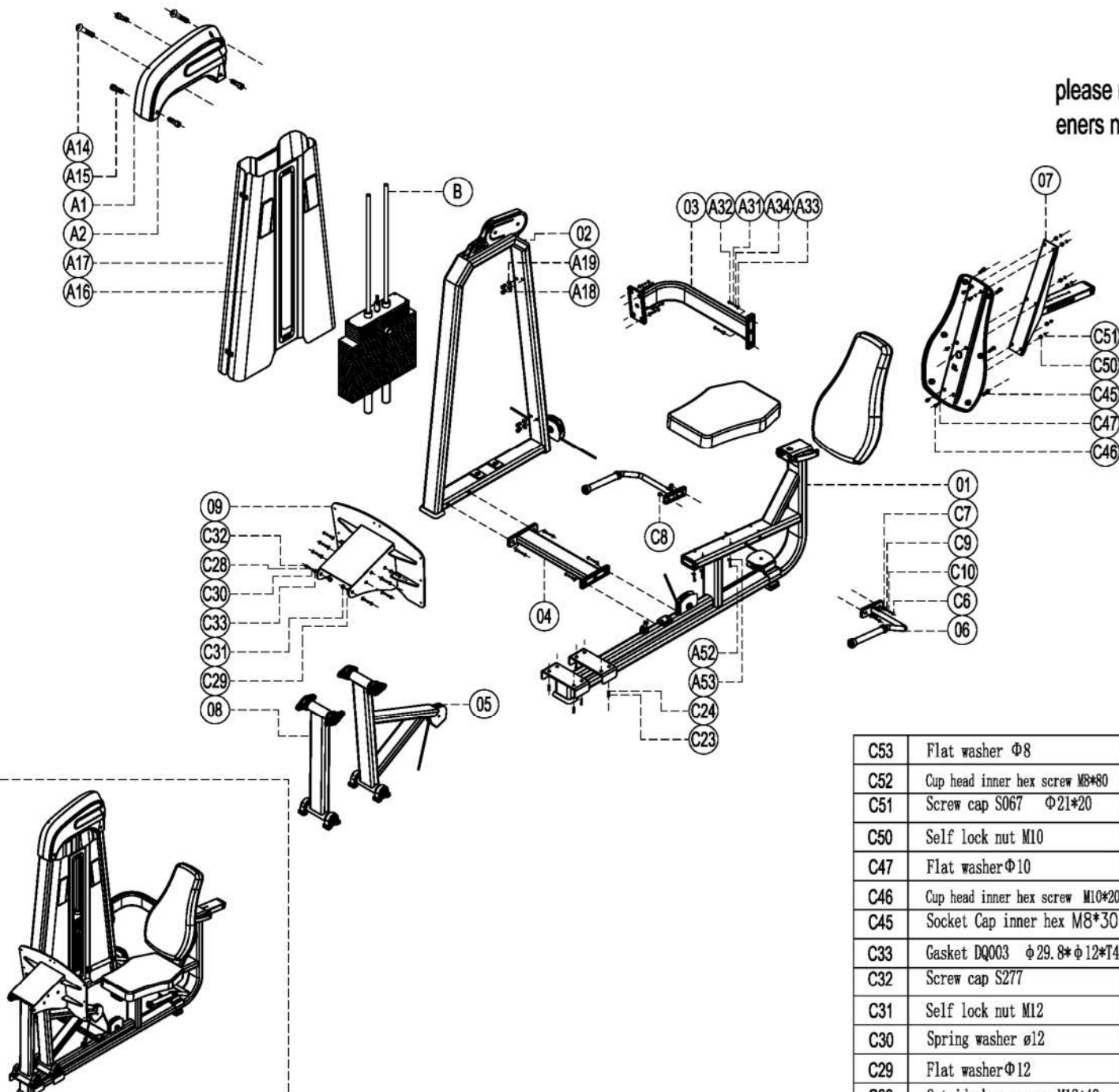


Exploded

F03 LFG PRESS

please note :parts didn't demolitionde part and fasteners not listde on the introduction



C24	Flat washer Φ10	8
C23	Socket Cap inner hex screw M10*20	8
C10	Outside hex screw M12*140	2
C9	Spring washer ø12	2
C8	Self lock nut M12	2
C7	Drum washer DQ003 φ29.8*φ12*14	4
C6	Screw cap S277	4
B	weight stack set	1
A34	Spring washer ø12	10
A33	Gasket DQ003 φ29.8*φ12*14	10
A32	Screw cap S277	10
A31	Outer hex screw M12*35	10
A19	Flat washer Φ8.3*Φ20*1.5	8
A18	Cup head inner hex screw M8*16	8
A17	Back shroud HB09	1
A16	Front shroud HB10	1
A15	Socket Cap inner hex M6*15	4

C53	Flat washer Φ8	6	A14	Cup head cross tapping screw M5*30	2
C52	Cup head inner hex screw M8*80	6	A2	Head cover S263	1
C51	Screw cap S067 Φ21*20	6	A1	Head cover S262	1
C50	Self lock nut M10	6	09	Footrest	2
C47	Flat washer Φ10	6	08	movable arm set	1
C46	Cup head inner hex screw M10*20	6	07	Cusion selection	1
C45	Socket Cap inner hex M8*30	6	06	Handle sets	2
C33	Gasket DQ003 φ29.8*φ12*14	8	05	Back connection set	1
C32	Screw cap S277	8	04	Below connection	1
C31	Self lock nut M12	8	03	upper connection	1
C30	Spring washer ø12	8	02	Door frame	1
C29	Flat washer Φ12	8	01	Main frame	1
C28	Outside hex screw M12*40	8	serial number	name	quantity